

NORTHWOOD UNIVERSITY

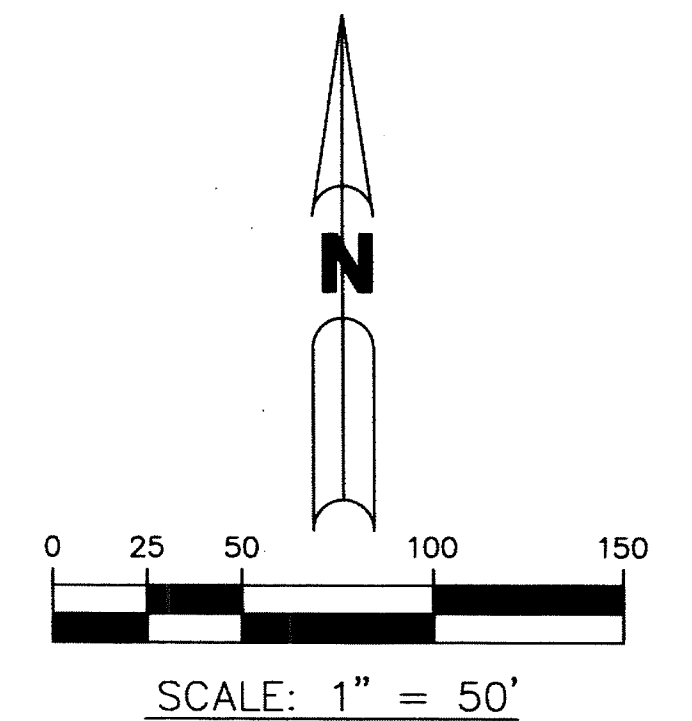
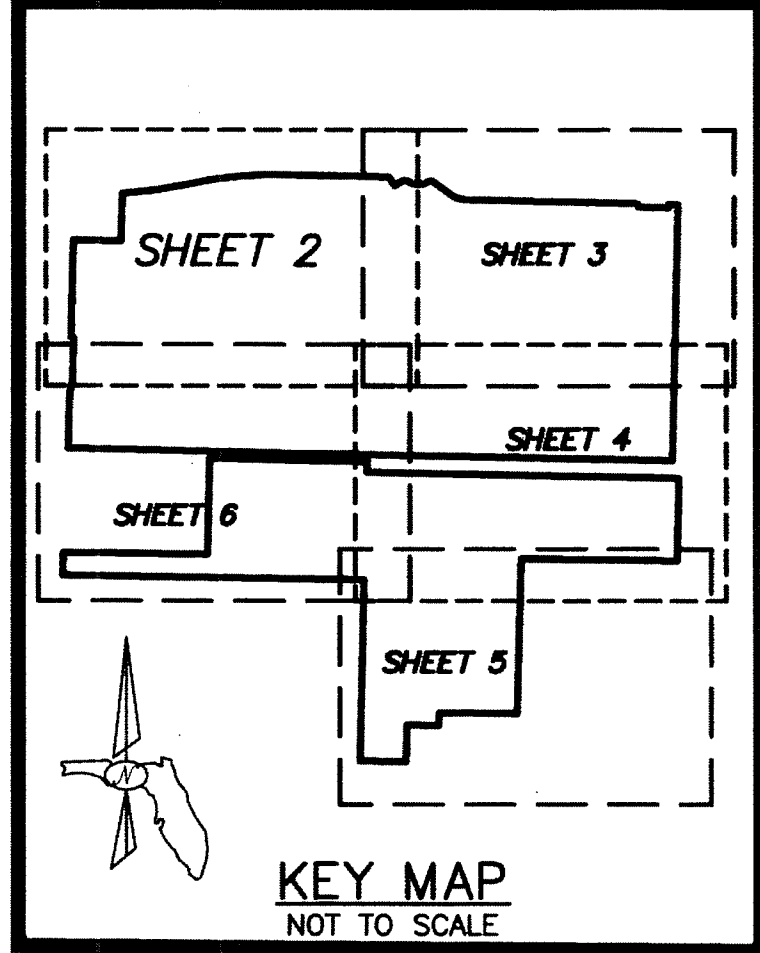
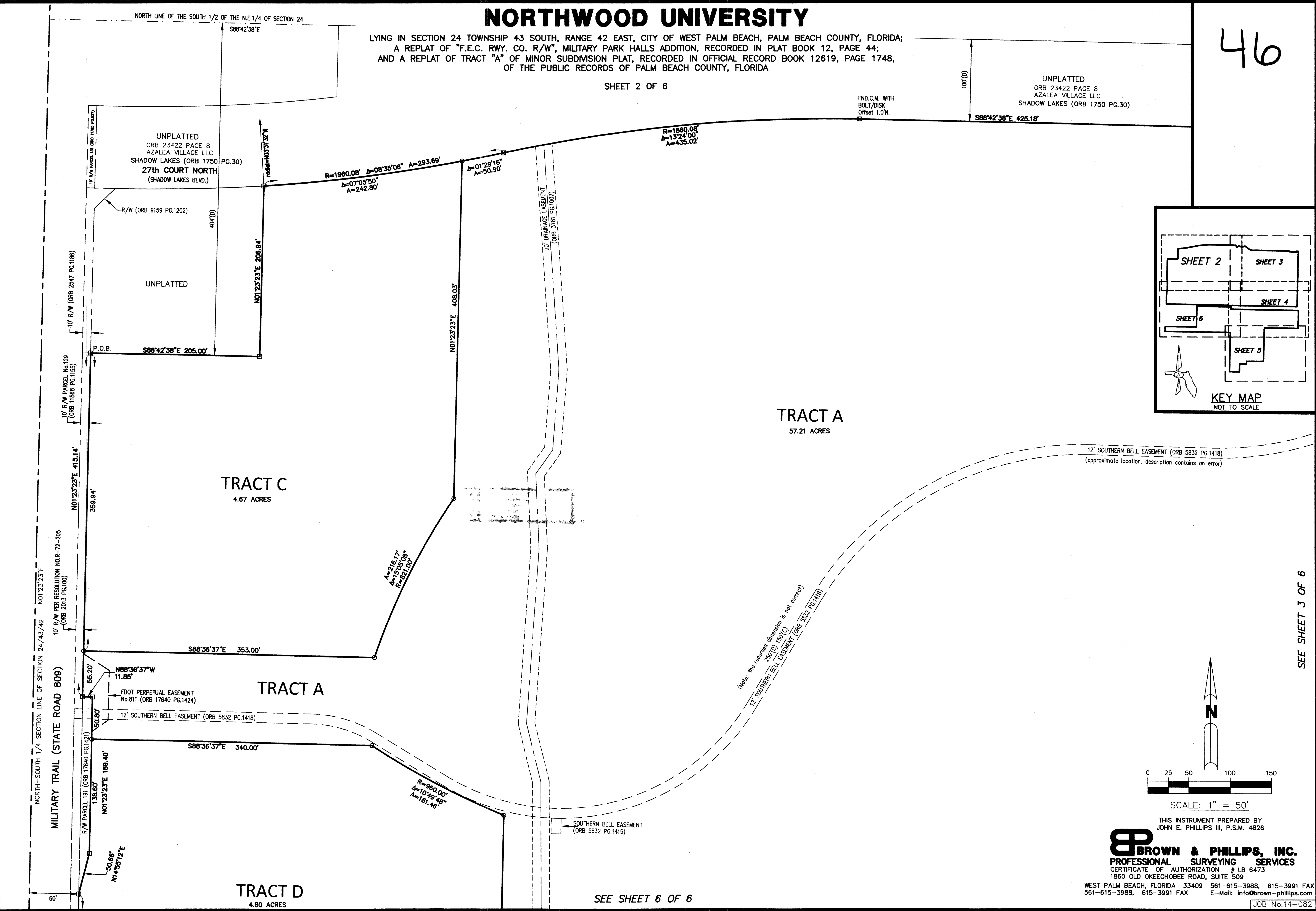
LYING IN SECTION 24 TOWNSHIP 43 SOUTH, RANGE 42 EAST, CITY OF WEST PALM BEACH, PALM BEACH COUNTY, FLORIDA;
 A REPLAT OF "F.E.C. RWY. CO. R/W", MILITARY PARK HALLS ADDITION, RECORDED IN PLAT BOOK 12, PAGE 44;
 AND A REPLAT OF TRACT "A" OF MINOR SUBDIVISION PLAT, RECORDED IN OFFICIAL RECORD BOOK 12619, PAGE 1748,
 OF THE PUBLIC RECORDS OF PALM BEACH COUNTY, FLORIDA

SHEET 2 OF 6

46

UNPLATTED
 ORB 23422 PAGE 8
 AZALEA VILLAGE LLC
 SHADOW LAKES (ORB 1750 PG.30)

FND.C.M. WITH
 BOLT/DISK
 Offset 1.0"N.



THIS INSTRUMENT PREPARED BY
 JOHN E. PHILLIPS III, P.S.M. 4826

BROWN & PHILLIPS, INC.
 PROFESSIONAL SURVEYING SERVICES
 CERTIFICATE OF AUTHORIZATION # LB 6473
 1860 OLD OKEECHOBEE ROAD, SUITE 509
 WEST PALM BEACH, FLORIDA 33409 561-615-3988, 615-3991 FAX
 561-615-3988, 615-3991 FAX E-Mail: info@brown-phillips.com

JOB No.14-082

S:\2014 drawing files\14-082\14-082 Northwood.dwg, 1/7/14/2015 8:27:51 AM, DWG To PDF, pc3